

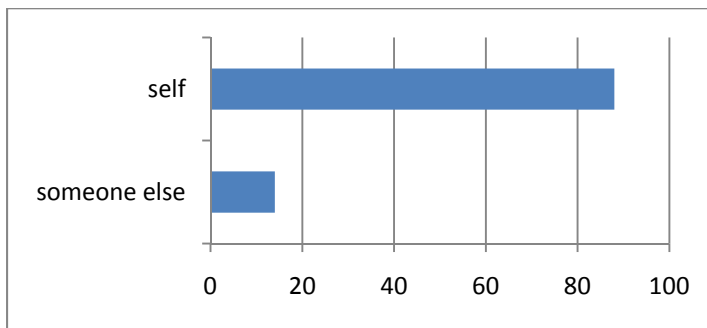
98 responses

Summary of Responses Middleport Soil Exposure Survey

(Note: Some answers on some surveys were left blank therefore, not all questions have 98 responses when tabulated.)

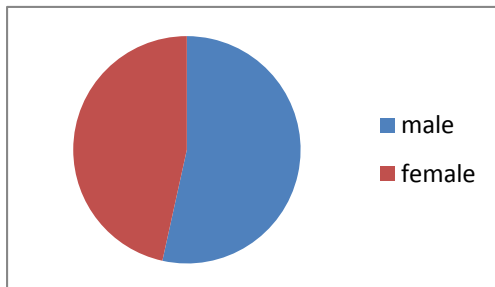
Demographics

Are you answering for yourself for someone else?



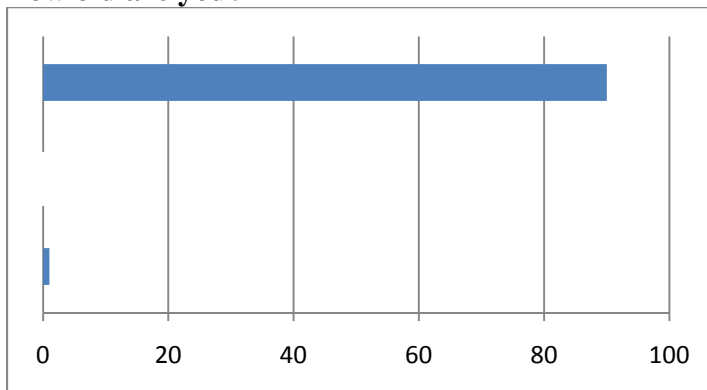
self	85	86%
someone else	13	14%

Are you male or female?



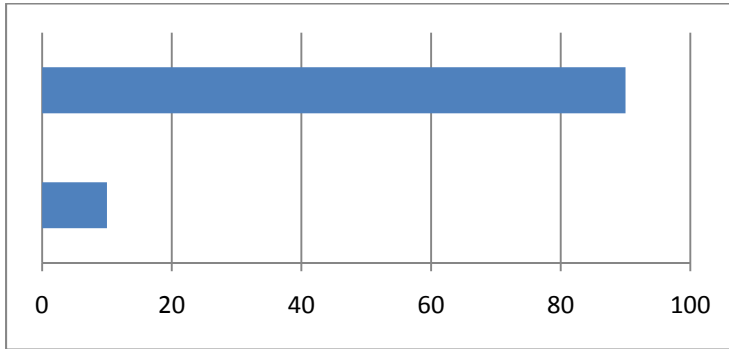
male	51	53%
female	44	47%

How old are you?



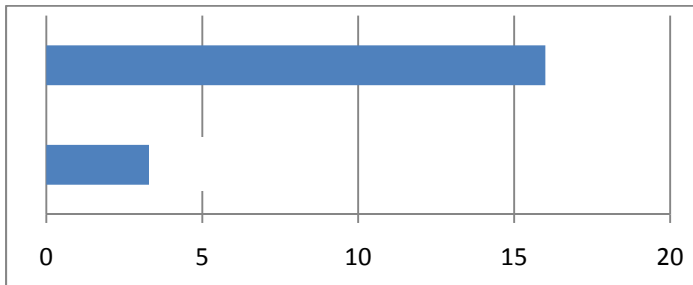
0-6	1	1%
6-18	0	0%
19+	87	99%

Do you live within the Village limits of Middleport?



yes	89	90%
no	9	10%

If the answer above is no, do you live within a mile of the Village?

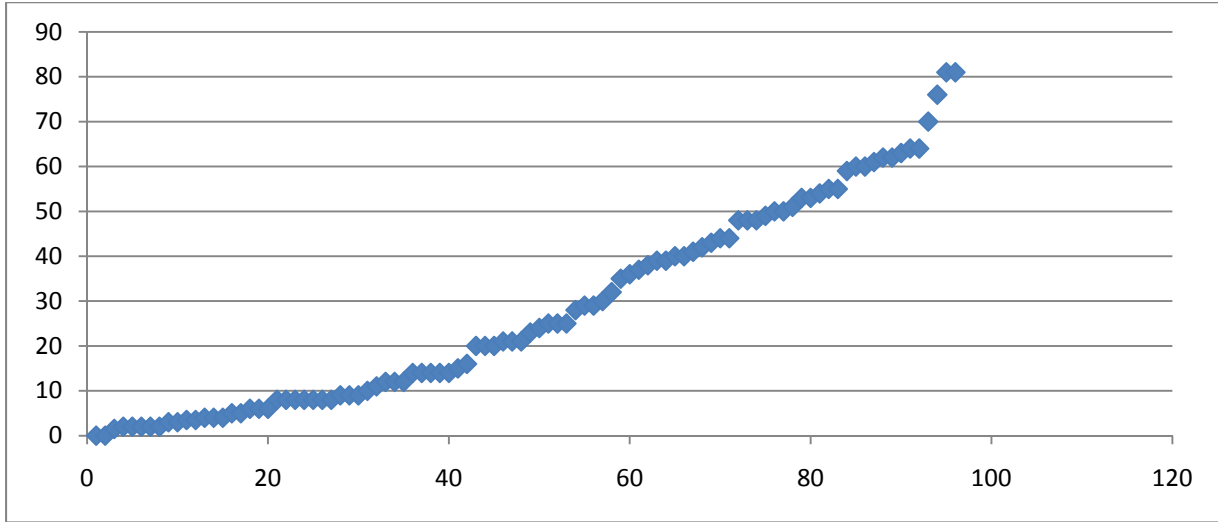


yes	16	84%
no	3	16%

NOTE: This does not correspond with the 9 "no" answers above. However, these are the actual number of responses to this question.

How many years have you lived in or near Middleport?
(Answers ranged from 0 to 81 years)

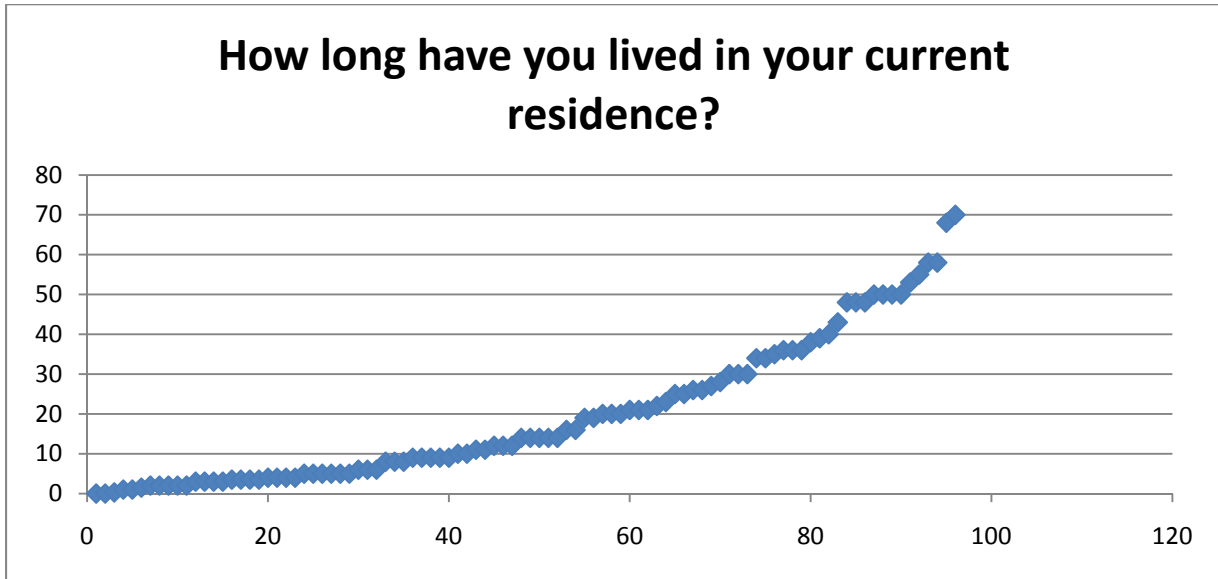
Years



Responses

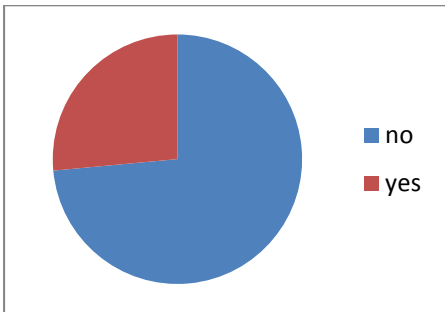
How long have you lived in your current residence?
(Answers ranged from 0 to 70 years.)

Years



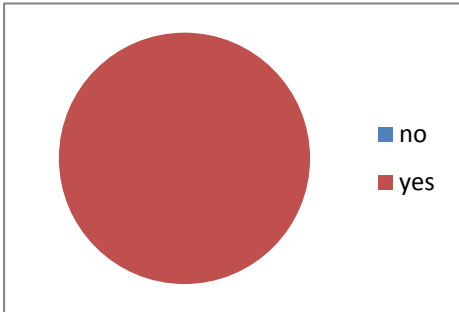
Responses

Do you work or attend school within the Village limits of Middleport?



yes	25	26%
no	73	74%

Do you live in a residence with a yard?

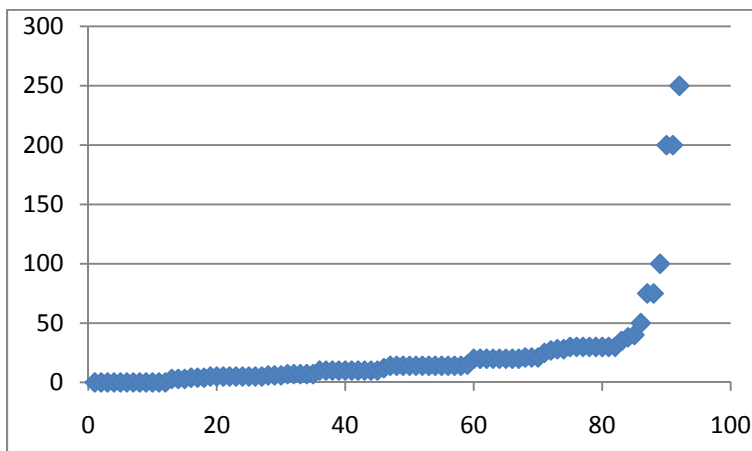


yes	98	100%
no	0	0%

Activities Around the Home

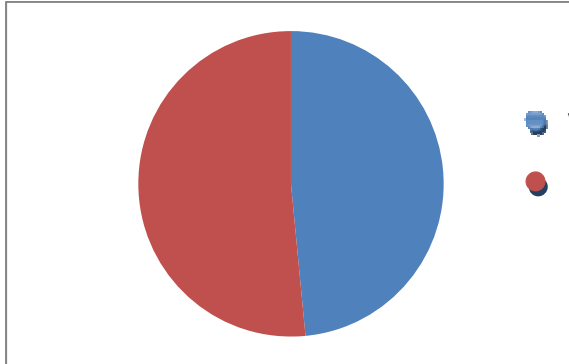
How many days per year on average do you spend away from your Middleport home overnight, traveling or at another residence?
 (Answers ranged from 0 to 250 days.)

Days



Responses

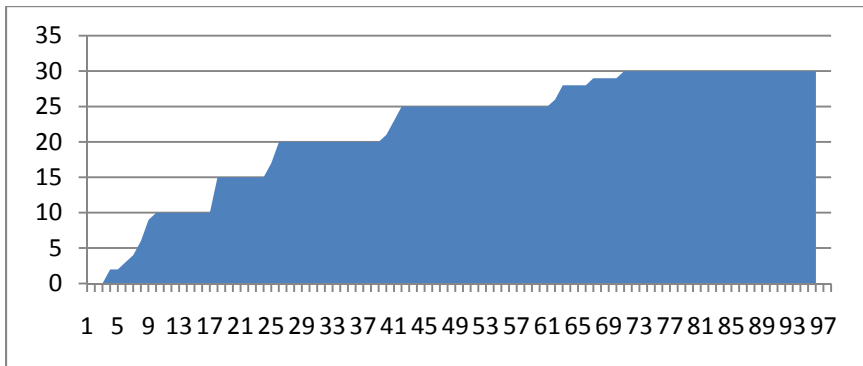
Do you use an air conditioner regularly during the summer months?



yes	46	48%
no	50	52%

On average, how many days per month would you estimate you spend time in your yard during the nicest weather (June, July, August, September)? (Answers ranged from 0 to 30 days.)

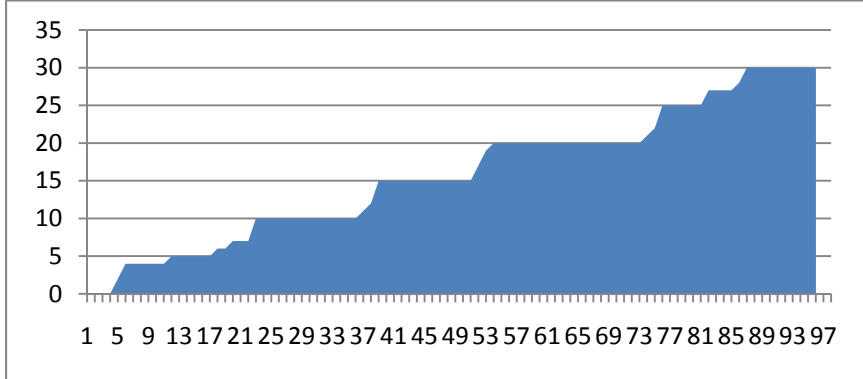
Days



Responses

On average, how many days per month would you estimate you spend time in your yard during the spring and fall (April, May, October, November)? (Answers ranged from 0 to 30 days.)

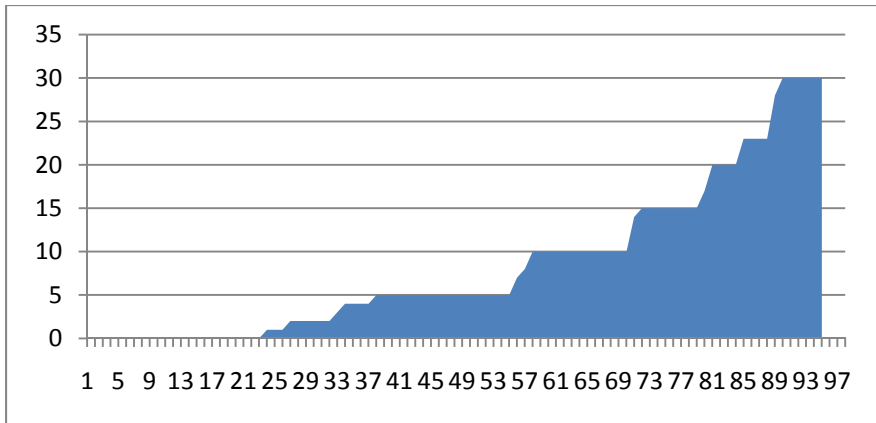
Days



Responses

On average, how many days per month would you estimate you spend time in your yard during the winter months (December, January, February, March)? (Answers ranged from 0 to 30 days.)

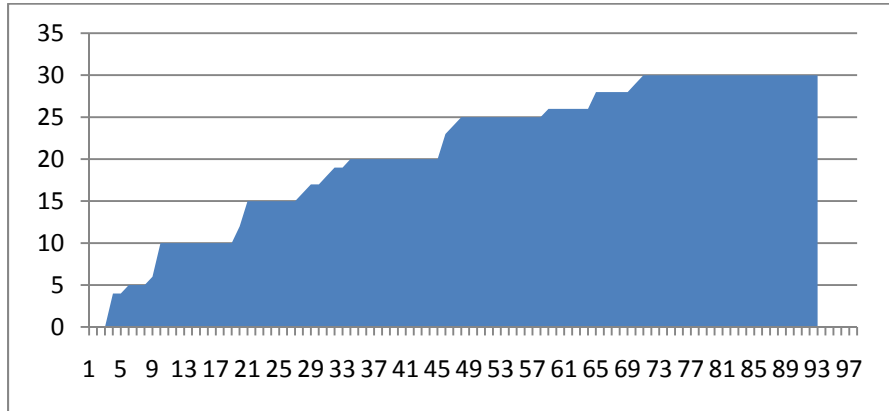
Days



Responses

On average, how many days per month would you estimate your yard is covered with snow during the winter months (December, January, February, March)? (Answers ranged from 0 to 30 days.)

Days



Responses

At what activities do you spend most of your time while in your yard? -

Gardening

1 (most often)	32	33%
2	16	16%
3	21	21%
4	21	21%
5 (never)	9	9%

At what activities do you spend most of your time while in your yard? - **Playing or supervising children playing**

1 (most often)	32	33%
2	10	10%
3	9	9%
4	19	19%
5 (never)	28	29%

At what activities do you spend most of your time while in your yard? -

Barbequing/picnicking

1 (most often)	21	22%
2	36	37%
3	18	19%
4	11	11%
5 (never)	11	11%

At what activities do you spend most of your time while in your yard? - Relaxing on lawn furniture

1 (most often)	18	19%
2	25	26%
3	20	21%
4	21	22%
5 (never)	12	12%

At what activities do you spend most of your time while in your yard? - Relaxing on the ground

1 (most often)	6	6%
2	8	8%
3	17	18%
4	28	30%
5 (never)	36	38%

At what activities do you spend most of your time while in your yard? - Home improvement projects

1 (most often)	12	13%
2	17	18%
3	21	22%
4	30	32%
5 (never)	14	15%

At what activities do you spend most of your time while in your yard? - Other

1 (most often)	12	37%
2	2	6%
3	7	21%
4	4	12%
5 (never)	8	24%

If you answered "Other" above, please describe.

playing, walking animals landscaping wash windows siding yard work mowing lawn lawn care cut grass mow lawn entertaining

How would you characterize the amount of time you spend on the following types of surfaces while in your yard (not including the garden)? - **Grass or other vegetation**

1 (most of my time)	60	61%
2	13	13%
3	15	16%
4	6	6%
5 (never)	4	4%

How would you characterize the amount of time you spend on the following types of surfaces while in your yard (not including the garden)? - **Bare dirt**

1 (most of my time)	10	11%
2	9	9%
3	9	9%
4	26	27%
5 (never)	41	44%

How would you characterize the amount of time you spend on the following types of surfaces while in your yard (not including the garden)? - **Beauty bark (wood chips)**

1 (most of my time)	3	3%
2	4	4%
3	11	11%
4	17	18%
5 (never)	61	64%

How would you characterize the amount of time you spend on the following types of surfaces while in your yard (not including the garden)? - **Gravel**

1 (most of my time)	1	1%
2	2	2%
3	13	14%
4	17	18%
5 (never)	60	65%

How would you characterize the amount of time you spend on the following types of surfaces while in your yard (not including the garden)? - Concrete/stone patio

1 (most of my time)	8	9%
2	20	21%
3	20	21%
4	9	10%
5 (never)	37	39%

How would you characterize the amount of time you spend on the following types of surfaces while in your yard (not including the garden)? - Wood deck

1	21	21%
2	13	13%
3	8	8%
4	10	14%
5 (never)	42	44%

How would you characterize the amount of time you spend on the following types of surfaces while in your yard (not including the garden)? - Other

1 (most of my time)	4	22%
2	4	22%
3	3	17%
4	0	0%
5 (never)	7	39%

If you answered "Other" as the ground cover above, please describe.

Garage floor - dirt and stone barn mowing lawn blacktop driveway

Summary of Responses for Middleport Soil Exposure Survey