



# FACT SHEET

## State Superfund Program

Receive Site Fact Sheets by *Email*. See "For More Information" to Learn How.

**Site Name:** FMC Corporation – Roy Hart School  
**DEC Site #:** 932014 Operable Unit 04\*  
**Address:** 100 Niagara Street  
Middleport, NY 14105

Have questions?  
See  
"Who to Contact"  
Below

### DEC ANNOUNCES PLAN TO BEGIN PHASE 4 SOIL REMEDIATION – JUNE 2018

Phase 4 – Summer 2018 of the soil remediation at the Royalton-Hartland (Roy-Hart) school property in Middleport, New York is scheduled to begin in June 2018. The remediation will be conducted by the New York State Department of Environmental Conservation (DEC) at no cost to the Roy-Hart School District.

The DEC, working with the Roy-Hart Board of Education and school district, have reached an agreement on work that can be completed during the Summer 2018 Construction Season that will minimize disruption of school activities.

Documents related to the cleanup of this site can be found at the location(s) identified below under "Where to Find Information."

#### Highlights of the Upcoming Cleanup Activities

The goal of the cleanup action for the site is to achieve cleanup levels that protect public health and the environment. The Roy-Hart cleanup action for the summer 2018 construction season includes:

1. Excavation and removal of approximately 8,300 cubic yards of soil from the area in front of, east, and southeast of the middle school; excavation and removal of the existing playground; and removal of the staging area and access road stone to the east of the middle school (Figures 1 and 2).
2. Backfilling and restoring excavation areas as requested by the Roy-Hart School District.
3. Installation of temporary fence to enclose all work areas.
4. Baseline indoor air sampling of high school, with continued air monitoring during intrusive work.
5. Community Air Monitoring Program during intrusive work.

The mobilization is scheduled for mid-June, while intrusive remedial work is scheduled to begin in late June and continue through September 2018. Intrusive work will begin to the east and southeast of the middle school property and move to the areas in front of and adjacent to the school during the summer months (See Figure). Restoration activities will continue through Fall 2018. NYSDEC understands it is important that the school remains open and functional during the academic year and has worked with school district with regards to this plan. Remediation activities that occur while school is in session will not begin until after 8:00 a.m. and construction vehicle traffic will be minimized for thirty minutes during school dismissals. Daily air monitoring will be performed during work hours to ensure that areas outside of the construction area are not impacted by remedial activities.

*\*Operable Unit:* An administrative term used to identify a portion of a site that can be addressed by a distinct investigation and/or cleanup approach. An operable unit can receive specific investigation, and a particular remedy may be proposed.

## Next Steps

The NYSDEC will continue to work with the Roy-Hart Board of Education and School District to develop the construction schedule for the remaining work.

The New York State Department of Environmental Conservation (NYSDEC) will keep the public informed throughout the cleanup of the site.

## Background

FMC Corporation owns and operates a facility due south of the school in the Village of Middleport. As a result of historic air emissions and surface discharges of process water, the facility contaminated nearby properties (including the Roy-Hart School), predominantly with arsenic.

The Roy-Hart school property was initially sampled and a partial soil removal was completed by FMC in 1996 and 1999 in the vicinity of the football field. The DEC performed additional soil sampling in 2014 and 2015 to more fully define the extent of arsenic contamination on the remainder of the property exceeding the 20-part-per-million (ppm) objective described in the May 2013 Final Statement of Basis (FSB). This data was used to determine the soil that will need to be removed.

Based on the soil sampling performed on the Roy-Hart school property by the DEC and FMC, arsenic contamination is at levels exceeding the 20 ppm soil cleanup objective at depths ranging from 0 to 4 feet below ground surface for the majority of the grassed areas on the property. During the 2015 Phase 1 construction season, approximately 8,000 cubic yards of contaminated soil was removed from the field hockey field located in the southeastern portion of the school property. During the 2016 Phase 2 construction season, approximately 984 cubic yards of contaminated soil was removed from the inner courtyards of the high school and areas to the southwest of the high school. During the 2017 Phase 3 construction season, approximately 18,000 cubic yards of contaminated soil was removed from the central area between the high school and middle school. Based on data collected to date, approximately 18,200 cubic yards of soil will remain to be excavated once the Phase 4 soil remediation activities are complete.

**State Superfund Program:** New York's State Superfund Program (SSF) identifies and characterizes suspected inactive hazardous waste disposal sites. Sites that pose a significant threat to public health and/or the environment go through a process of investigation, evaluation, cleanup and monitoring.

NYSDEC attempts to identify parties responsible for site contamination and require cleanup before committing State funds.

For more information about the SSF, visit: <http://www.dec.ny.gov/chemical/8439.html>

## FOR MORE INFORMATION

### Where to Find Information

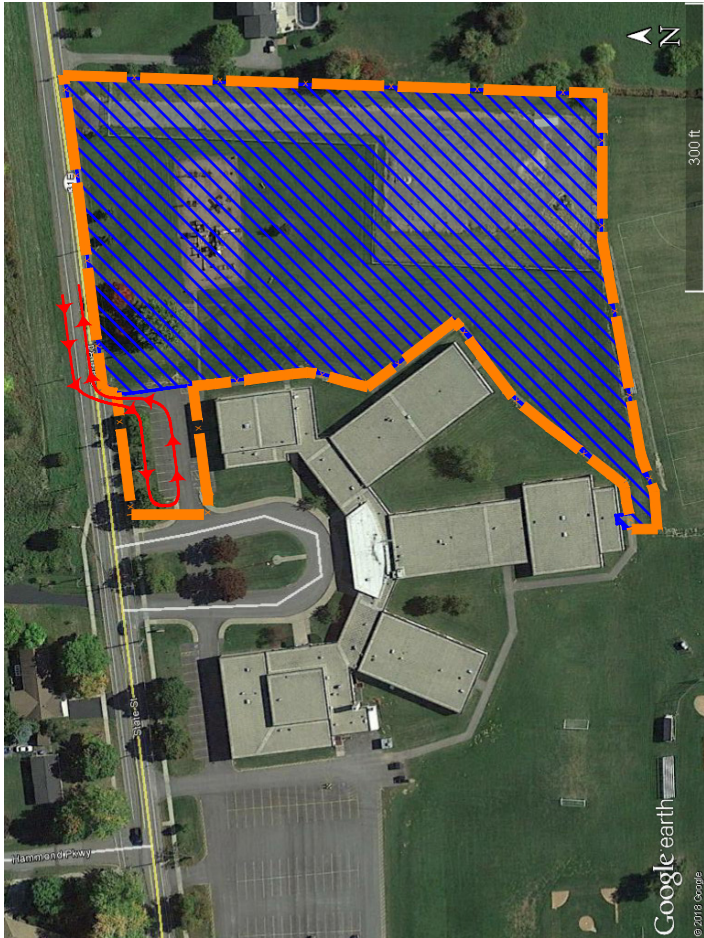
Project documents are available at the following location(s) to help the public stay informed.

Royalton Hartland Community Library  
9 South Vernon Street  
Middleport, NY 14105  
Phone: 716-735-3281




Project documents are also available on the NYSDEC website at:

<http://www.dec.ny.gov/chemical/37554.html>

### Phase 4 Work Area Roy-Hart School, Middleport, NY while School is in Session (June and September)



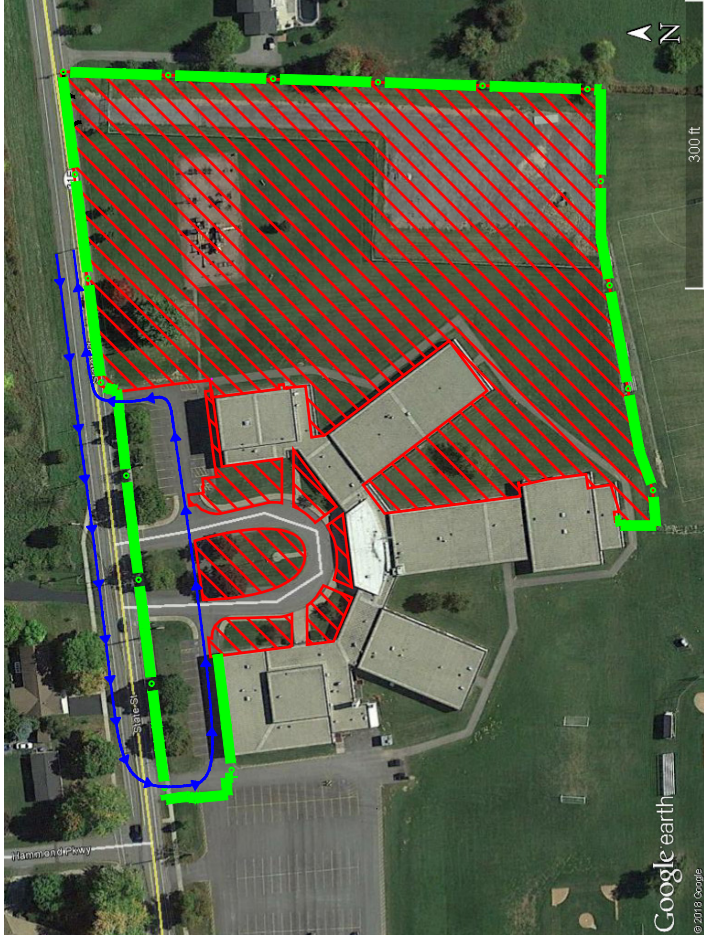
#### LEGEND

-  Temporary Fence for Construction Activities  
While School is in Session
-  Approximate Phase 4 Excavation Area  
While School is in Session
-  Truck Route for Activities  
While School is in Session




#### NOTES

1. Background image Google Earth ©2018

### Phase 4 Work Area Roy-Hart School, Middleport, NY During Summer Recess



#### LEGEND

-  Temporary Fence for Construction Activities  
While School is Not in Session
-  Approximate Phase 4 Excavation Area  
While School is Not in Session
-  Truck Route for Activities  
While School is Not in Session

#### NOTES

1. Background image Google Earth ©2018

### **Who to Contact**

Comments and questions are always welcome and should be directed as follows:

Project Related Questions  
Heide-Marie Dudek, P.E.  
Department of Environmental Conservation  
Division of Environmental Remediation  
625 Broadway  
Albany, NY 12233-7016  
518-402-9813  
heidi.dudek@dec.ny.gov

Site-Related Health Questions  
Stephanie Selmer  
New York State Department of Health  
Bureau of Environmental Exposure Investigation  
Corning Tower, Albany NY  
518-402-7870  
stephanie.selmer@health.ny.gov

**We encourage you to share this fact sheet with neighbors and tenants, and/or post this fact sheet in a prominent area of your building for others to see.**

### **Receive Site Fact Sheets by Email**

Have site information such as this fact sheet sent right to your email inbox. NYSDEC invites you to sign up with one or more contaminated sites county email listservs available at the following web page: <http://www.dec.ny.gov/chemical/61092.html>. It's quick, it's free, and it will help keep you *better informed*.

As a listserv member, you will periodically receive site-related information/announcements for all contaminated sites in the county(ies) you select.

Note: Please disregard if you already have signed up and received this fact sheet electronically.

# Act Now to Continue Receiving Information About This Site!

DEC's Division of Environmental Remediation (DER) now distributes information about contaminated sites *electronically by email*.

If you would like to continue to receive information about the contaminated site featured in this fact sheet:

**You must sign up for the DER email listserv:**

[www.dec.ny.gov/chemical/61092.html](http://www.dec.ny.gov/chemical/61092.html)

DER cannot register your email address - only the email address owner can do so. If you already have signed up for the listserv for the county in which the site is located, you need do nothing.



## **Why You Should Go “Paperless”:**

Get site information faster and share it easily;

Receive information about all sites in a chosen county - read what you want, delete the rest;

It helps the environment and stretches your tax dollars.

**If “paperless” is not an option for you**, call or write to the DER project manager identified in this fact sheet. Indicate that you need to receive paper copies of fact sheets through the Postal Service. Include the site name in your correspondence. The option to receive paper is available to individuals only. Groups, organizations, businesses, and government entities are assumed to have email access.



# *Royalton-Hartland Central School District*

*54 State Street*

*Middleport, New York 14105-1199*

*Phone: 716-735-2000 Fax: 716-735-2036*

## Community Members:

The New York State Department of Conservation will be entering phase four of a six phase remediation beginning this month. The multi-year process is expected to have full restoration of the school's property by the fall of 2020. Phase four will take place on the eastern side of the middle school and includes the remediation of soil around the school. Contaminated soil will be removed and "clean soil" returned to the site.

The remediation will also include the removal of trees and the playground located on the site. Construction is expected to continue into the fall. Plans are in place for the replacement of trees in coordination with our Agricultural Education Program's need for a "Land Lab" on school grounds. The Board of Education has committed to the replacement of a community playground on the middle/ high school site as part of their "Long Range Plan" for facilities and grounds. The playground will be similar to what is currently located at the middle school, but will be improved to meet the 2018 standards for school and community playgrounds.

The remediation of the school's grounds has resulted in much improved playing surfaces for our field hockey, softball and other athletic teams. The remediation during the summer of 2018 will result in the creation of an access drive and parking lot adjacent to the field hockey and softball fields. Site work will also be completed for the installation of six tennis and pickleball courts to be included as part of the "Long Range Plan" for facilities and grounds.

If you have any questions, please feel free to contact me in the District Office at 716-735-2000 ext 2318.

Sincerely,

Dr. Hank Stopinski  
Superintendent of Schools

### *Royalton-Hartland High School*

54 State Street  
Middleport, NY 14105  
Phone: 716-735-2000 Ext. 2016  
Fax: 716-735-2046

### *Royalton-Hartland Middle School*

78 State Street  
Middleport, NY 14105  
Phone: 716-735-2000 Ext. 6712  
Fax: 716-735-2056

### *Royalton-Hartland Elementary School*

4500 Orchard Place  
Gasport, NY 14067  
Phone: 716-735-2000 Ext. 3054  
Fax: 716-735-2066