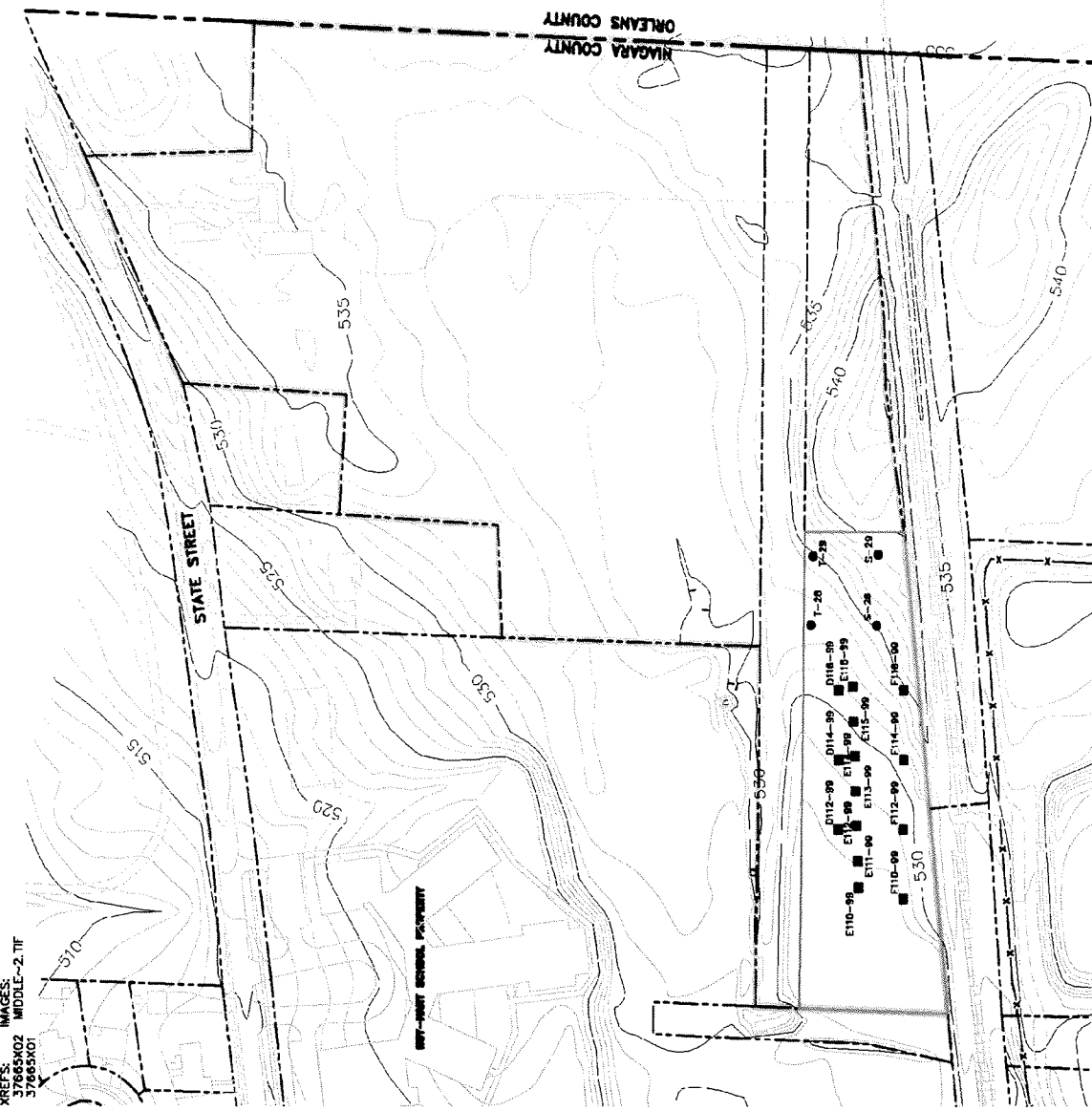


## **APPENDIX B**

---

### **Existing Soil Data for Study Sites**

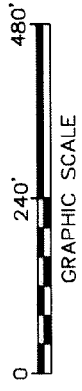
CATALOG: 37665000  
 XREFS: IMAGES:  
 37665X02 MIDDLE-2.TIF  
 37665X01



- LEGEND:**
- APPROXIMATE BOUNDARY OF PILOT STUDY
  - - - APPROXIMATE BOUNDARY OF PROPERTY
  - APPROXIMATE PROPERTY BOUNDARY LINE
  - EXISTING BUILDING
  - EXISTING ELEVATION CONTOUR LINE (CONTOUR INTERVAL 1 FOOT)
  - HISTORICAL SAMPLE LOCATION
  - R426
  - V-26
  - RAILROAD
  - FMC PROPERTY FENCELINE

**NOTES:**

1. BASEMAP OBTAINED FROM A FIGURE BY CONESTOGA-ROVERS AND ASSOCIATES ENTITLED "HISTORIC ARSENIC SOIL SEDIMENT DATA - NORTH RAILROAD PROPERTY" DATED OCTOBER 2003 AT A SCALE OF 1"=120'.
2. ALL LOCATIONS AND PROPERTY BOUNDARIES SHOWN ARE APPROXIMATE AND SUBJECT TO VERIFICATION.



PHYTOREMEDIATION  
 PILOT STUDY SITE  
 FMC Corporation  
 Middleport, New York

**Arsenic Soil Analytical Results**  
**Phytoremediation Pilot Study Area - Agricultural Field**  
**FMC Corporation - Middleport, New York**

Sample ID	Sample Depth (inches)	Sample Date	FMC Concentration		NYSDEC Split Concentration		Combined Arsenic Concentration (ppm)
			Primary	Duplicate	Primary	Duplicate	
			(ppm)	(ppm)	(ppm)	(ppm)	
R1a-S28	0-3	9/21/2004	36.5	--	--	--	36.5
	3-6	9/21/2004	42.1	--	--	--	42.1
	6-9	9/21/2004	10.9	--	33.9	38.4	27.7
	9-12	9/21/2004	32.2	--	--	--	32.2
R1a-S29	0-3	9/21/2004	43.5	--	--	--	43.5
R1a-T28	0-3	9/21/2004	38.6	--	38.1	39.5	38.7
R1a-T29	0-3	9/21/2004	41.4	--	--	--	41.4
	3-6	9/21/2004	42.7	--	--	--	42.7
	6-9	9/21/2004	34.0	--	--	--	34.0
	9-12	9/21/2004	10.8	--	--	--	10.8
D112-99	0-3	4/29/1999	63.1	--	--	--	63.1
D114-99	0-3	4/29/1999	52.4	52.9	--	--	52.7
D116-99	0-3	4/29/1999	48.0	--	--	--	48.0
E110-99	0-3	4/29/1999	49.1	--	--	--	49.1
E111-99	0-3	4/29/1999	52.6	--	--	--	52.6
E112-99	0-3	4/29/1999	71.3	--	--	--	71.3
E113-99	0-3	4/29/1999	35.4	--	--	--	35.4
E114-99	0-3	4/29/1999	48.5	--	--	--	48.5
E115-99	0-3	4/29/1999	54.1	--	--	--	54.1
E116-99	0-3	4/29/1999	49.1	--	--	--	49.1
F110-99	0-3	4/29/1999	65.3	--	--	--	65.3
F112-99	0-3	4/29/1999	69.0	--	--	--	69.0
F114-99	0-3	4/29/1999	56.4	--	--	--	56.4
F116-99	0-3	4/29/1999	53.6	--	--	--	53.6

Notes:  
Results in mg/kg, equivalent to parts-per-million (ppm)



TABLE AB4

**ARSENIC SOIL ANALYTICAL RESULTS**  
**POST - 2007 EARLY ACTIONS**  
**FMC CORPORATION - MIDDLEPORT, NEW YORK**

Sample ID	Sample Interval (inches)	Sample Date	FMC Concentration		NYSDEC Split Concentration		Average Arsenic Concentration	
			Primary (mg/kg)	Duplicate (mg/kg)	Primary (mg/kg)	Duplicate (mg/kg)	Soil Remaining (mg/kg)	Excavated Soil (mg/kg)
AB4-1	0-3	5/31/2007	31.8 J	--	--	--	31.8	--
	3-6	5/31/2007	34.7 J	--	--	--	34.7	--
	6-12	5/31/2007	51.8 J	48.3	--	--	51.8	--
	12-18	5/31/2007	27.5 J	--	--	--	27.5	--
	18-24	5/31/2007	6.7 J	--	--	--	6.7	--
	24-30	5/31/2007	5.7 J	--	--	--	5.7	--
	30-36	5/31/2007	5.8 J	--	--	--	5.8	--
C2.1S	0-3	4/26/2004	28.8	--	--	--	--	28.8
	3-6	4/26/2004	--	--	5.5 N*	--	--	5.5
	6-12	4/26/2004	2.7	--	2.6 N*	--	--	2.7
	12-18	4/26/2004	2.2	--	--	--	2.2	--
	18-24	4/26/2004	2.4	--	--	--	2.4	--
C2.1W1	0-3	4/26/2004	32.3	--	--	--	--	32.3
	3-6	4/26/2004	--	--	57.6 N*	--	--	57.6
	6-12	4/26/2004	42.5	--	--	--	--	42.5
	12-18	4/26/2004	16.4	--	--	--	16.4	--
	18-24	4/26/2004	5.1	--	--	--	5.1	--
C2.1E1	0-3	4/27/2004	10.6 J	--	--	--	--	10.6
	3-6	4/27/2004	--	--	83.9 *	--	--	83.9
	6-12	4/27/2004	78.3 J	--	--	--	--	78.3
	12-18	4/27/2004	2.6 J	--	--	--	--	2.6
	18-23	4/27/2004	3.1 J	--	--	--	3.1	--
C2.1E2	0-3	4/27/2004	24.7 J	--	--	--	--	24.7
	3-6	4/27/2004	--	--	38.5 *	--	--	38.5
	6-12	4/27/2004	15.9 J	--	--	--	--	15.9
	12-18	4/27/2004	7.2 J	--	--	--	--	7.2
	12-18	5/31/2007	7.9 J	--	--	--	--	7.9
	18-24	4/27/2004	29.3 J	--	--	--	--	29.3
C2.1E2.5	18-24	5/31/2007	5 J	--	--	--	--	5
	24-30	5/31/2007	19.6 J	--	--	--	19.6	--
	30-32	5/31/2007	15.7 J	--	--	--	15.7	--
C2.1E3	0-3	4/27/2004	36.9 J	--	--	--	--	36.9
	3-6	4/27/2004	--	--	36.7 *	--	--	36.7
	6-12	4/27/2004	20.6 J	--	--	--	--	20.6
	12-18	4/27/2004	4.8 J	4.7	--	--	--	4.8
C2E2	18-24	4/27/2004	3.8	--	--	--	--	3.8
	0-3	10/16/2002	11.3 J	--	--	--	--	11.3
	3-6	10/16/2002	21.3 J	--	--	--	--	21.3
	6-12	10/16/2002	16.9 J	--	--	--	--	16.9
C2E3	0-3	10/16/2002	153 J	--	--	--	--	153
	3-6	10/16/2002	199 J	--	--	--	--	199
	6-12	10/16/2002	126 J	--	--	--	--	126
	12-18	5/31/2007	130 J	--	--	--	--	130
	18-24	5/31/2007	10.2 J	--	--	--	10.2	--
	24-30	5/31/2007	3.5 J	--	--	--	3.5	--
C2E4	30-36	5/31/2007	3.7 J	--	--	--	3.7	--
	0-3	4/27/2004	97.8 J	--	--	--	97.8	--
	3-6	4/27/2004	--	--	98.7 N*	--	98.7	--
	6-12	4/27/2004	82.6 J	--	--	--	82.6	--
	12-18	4/27/2004	16.7 J	15.6 J	--	--	16.2	--
C2E5	18-24	4/27/2004	3.4 J	--	--	--	3.4	--
	0-3	4/27/2004	76.5 J	--	--	--	76.5	--
	3-6	4/27/2004	--	--	97.6 N*	--	97.6	--
	6-12	4/27/2004	47.1 J	--	--	--	47.1	--
	12-18	4/27/2004	4.4 J	--	--	--	4.4	--
18-24	4/27/2004	2.3 J	--	--	--	2.3	--	

**Soil Remaining    Excavated Soil**  
**Property Average (mg/kg):    28.6                    42.5**

**TABLE AB4**



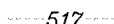
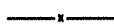


**ARSENIC SOIL ANALYTICAL RESULTS  
POST - 2007 EARLY ACTIONS  
FMC CORPORATION - MIDDLEPORT, NEW YORK**

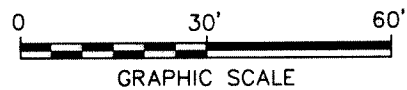
**Notes:**

1. Arsenic results are presented in milligrams per kilogram (mg/kg). Milligrams per kilogram equivalent to parts-per-million (ppm).
2. Data Qualifiers:
  - J - The reported concentration is an estimated value.
  - N - Indicates spike sample recovery is not within quality control limits.
  - \* - Relative percent difference is outside stated control limits.



**LEGEND:**

-  APPROXIMATE PROPERTY LINE
-  EXISTING BUILDING
-  EXISTING ELEVATION CONTOUR LINE (CONTOUR INTERVAL 1 FOOT)
-  EXISTING FENCE
-  HISTORIC SAMPLE LOCATION
-  2004 AIR DEPOSITION SAMPLE LOCATION



**NOTES:**

1. BASEMAP OBTAINED FROM A FIGURE BY CONESTOGA-ROVERS AND ASSOCIATES ENTITLED "HISTORIC ARSENIC SOIL/SEDIMENT DATA - NORTH RAILROAD PROPERTY" DATED OCTOBER 2003 AT A SCALE OF 1"=120'.
2. ALL LOCATIONS AND PROPERTY BOUNDARIES SHOWN ARE APPROXIMATE AND SUBJECT TO VERIFICATION.

FMC CORPORATION - MIDDLEPORT, NEW YORK  
 AREAS POTENTIALLY AFFECTED BY  
 HISTORICAL AIR DEPOSITION

**59 STATE STREET  
 PARCEL 86.13.2-54**

**BBL**<sup>®</sup>  
 BLASLAND, BOUCK & LEE, INC.  
*engineers, scientists, economists*

FIGURE  
**F2**

X: 37669X0P, 37665X01, 37665X02  
 L: ON="\*, OFF="\*REF"  
 P: PAGESET/PLT-AP1  
 6/10/05 SYR-85-DMJ KLS PGL  
 37669030/BLOCK F/37669847.DWG

**TABLE F2  
59 STATE STREET**

**ARSENIC SOIL ANALYTICAL RESULTS  
AREAS POTENTIALLY AFFECTED BY HISTORICAL AIR DEPOSITION  
FMC CORPORATION - MIDDLEPORT, NEW YORK**

Sample ID	Sample Interval (inches)	Sample Date	FMC Concentration		NYSDEC Split Concentration		Average Arsenic Concentration (mg/kg)
			Primary (mg/kg)	Duplicate (mg/kg)	Primary (mg/kg)	Duplicate (mg/kg)	
F2-1	0-3	10/4/2004	27.2 J	--	--	--	27.2
F2-2	0-3	10/4/2004	28.3 J	--	--	--	28.3
	3-6	10/4/2004	46.7 J	--	47.3 E	--	47.0
	6-9	10/4/2004	56.8	--	--	--	56.8
	9-12	10/4/2004	24.0	--	--	--	24.0
F2-3	0-3	10/4/2004	30.2 J	--	--	--	30.2
F2-4	0-3	10/4/2004	8.9 J	--	--	--	8.9
	3-6	10/4/2004	9.7 J	--	--	--	9.7
	6-9	10/4/2004	--	--	8.8 E	--	8.8
NWSS17	0-3	4/2/1997	33.2	--	40.4	--	36.8

**Notes:**

1. Data Qualifiers:

- E - Indicates a value estimated or not reported due to the presence of interferences.
- J - The reported concentration is an estimated value.