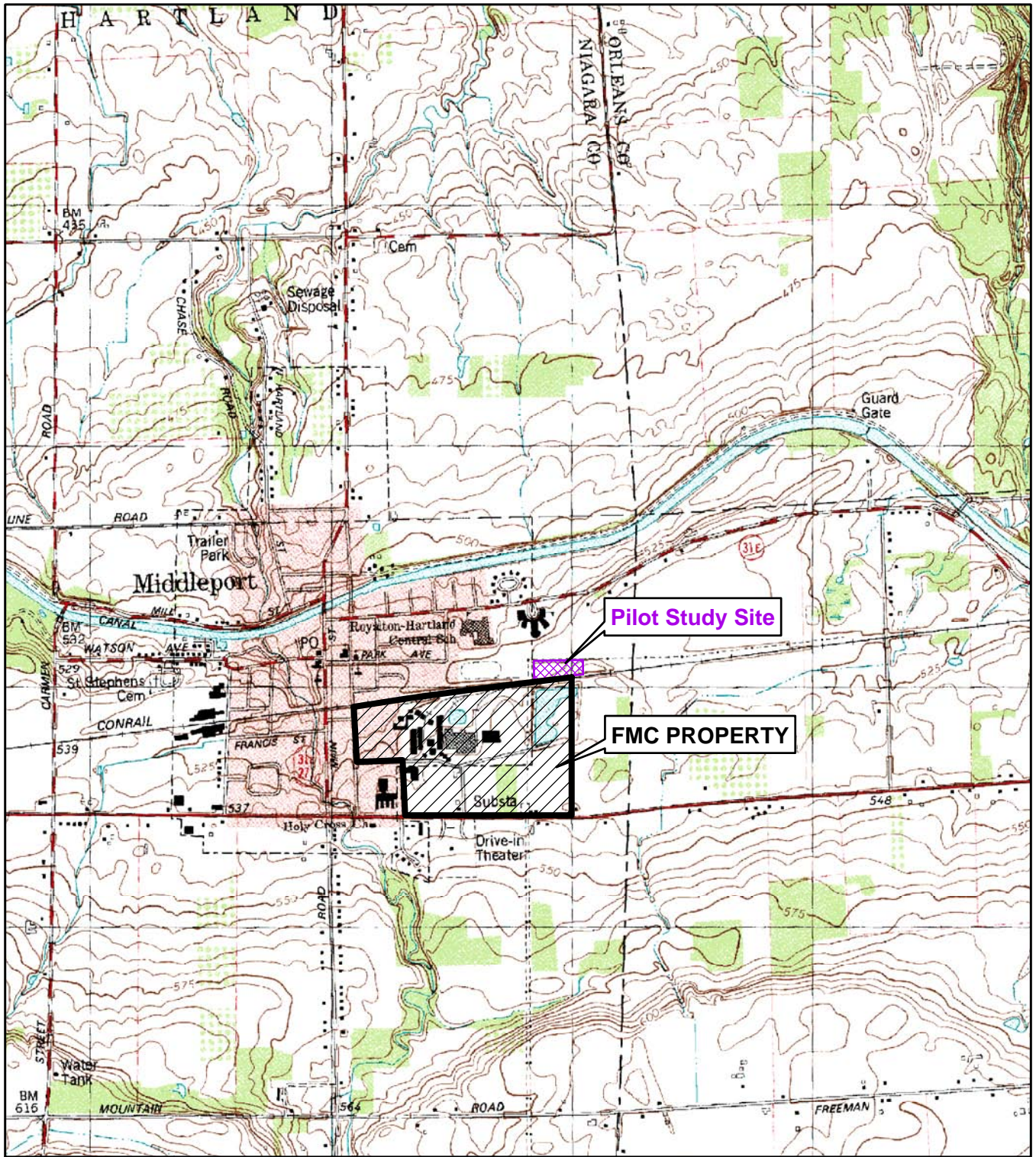
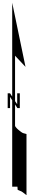


FIGURES



N:\19000s\009936\gis_SLM.mxd



APPROXIMATE SCALE IN FEET
0 1,000 2,000



0 300 600
APPROXIMATE SCALE IN METERS

Basemap modified from U.S.G.S. 7.5 minute
Medina, New York topographic quadrangle.

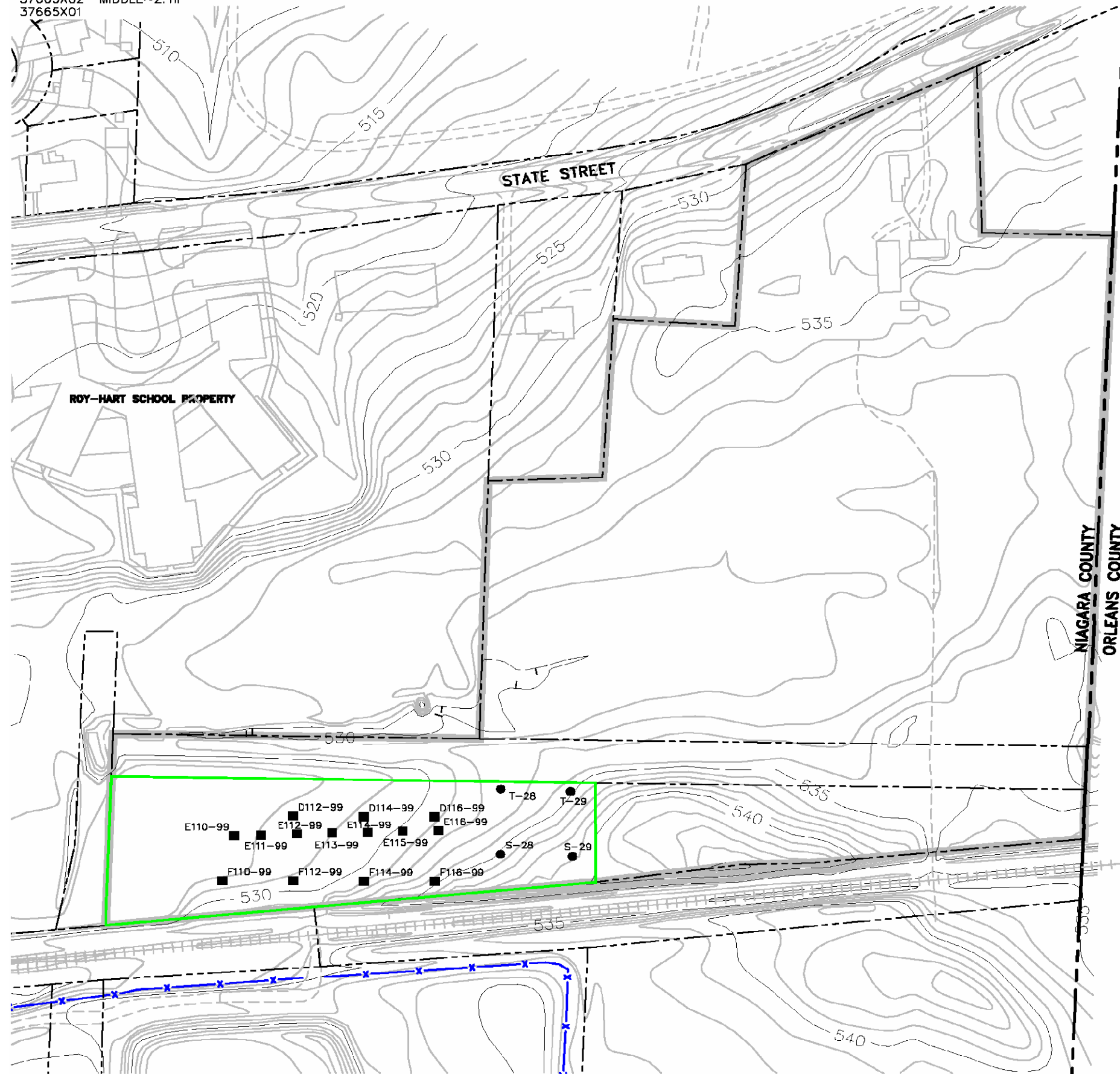
SITE LOCATION MAP
FMC Corporation
Middleport, New York

By: KLU	Date: 11/29/2007	Project No. 9936.000
---------	------------------	----------------------



Figure **1**

CATALOG: 37665000
 XREFS: IMAGES:
 37665X02 MIDDLE~2.TIF
 37665X01

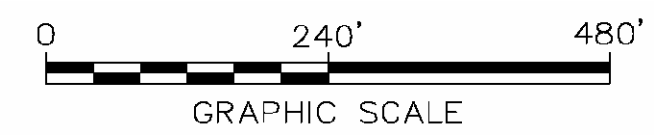


LEGEND:

- APPROXIMATE BOUNDARY OF PILOT STUDY
- APPROXIMATE BOUNDARY OF PROPERTY
- APPROXIMATE PROPERTY BOUNDARY LINE
- EXISTING BUILDING
- 540 EXISTING ELEVATION CONTOUR LINE (CONTOUR INTERVAL 1 FOOT)
- RH26 HISTORICAL SAMPLE LOCATION
- V-28 2004 SAMPLE LOCATION
- RAILROAD
- x-x- FMC PROPERTY FENCELINE

NOTES:

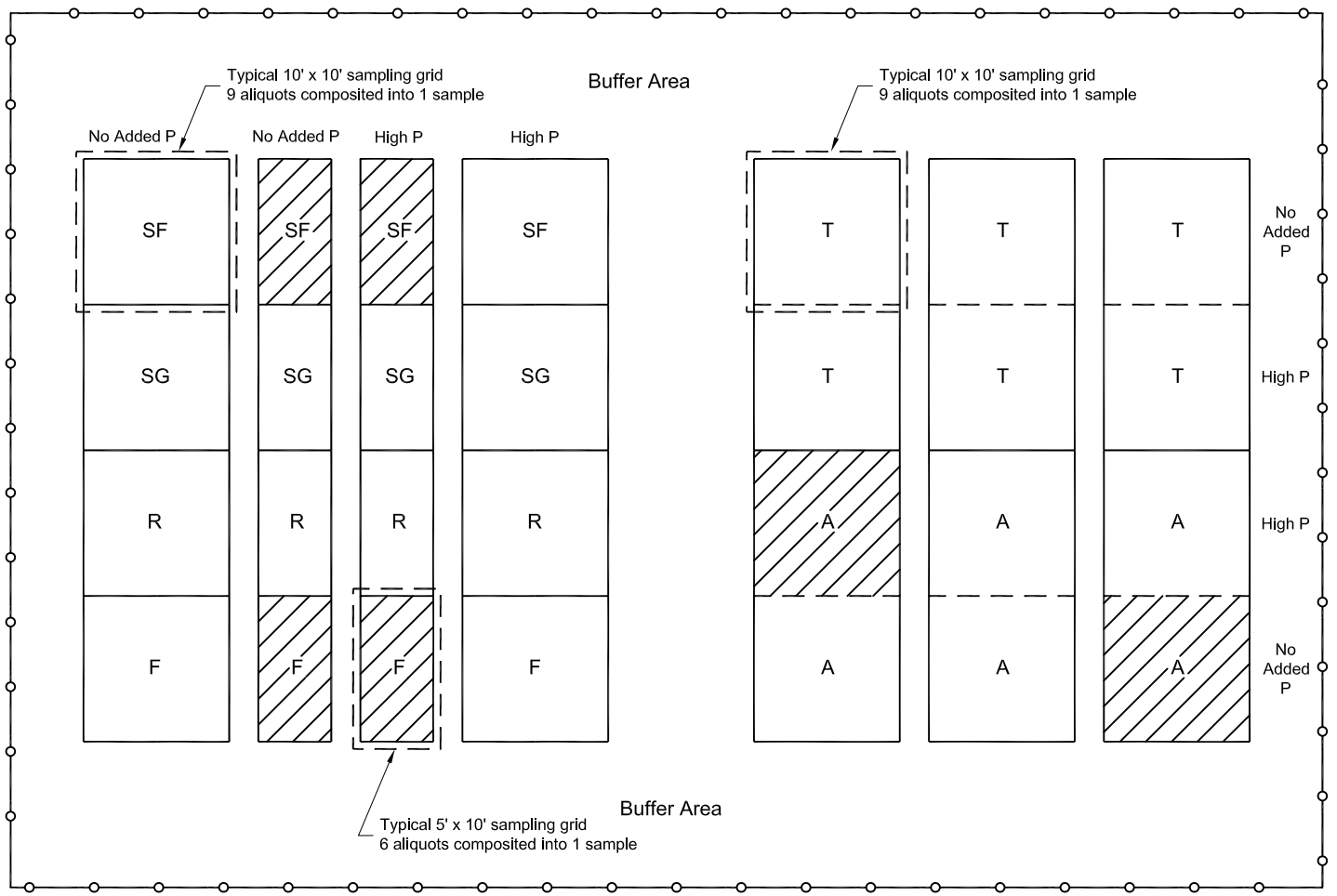
1. BASEMAP OBTAINED FROM A FIGURE BY CONESTOGA-ROVERS AND ASSOCIATES ENTITLED "HISTORIC ARSENIC SOIL/SEDIMENT DATA - NORTH RAILROAD PROPERTY" DATED OCTOBER 2003 AT A SCALE OF 1"=120'.
2. ALL LOCATIONS AND PROPERTY BOUNDARIES SHOWN ARE APPROXIMATE AND SUBJECT TO VERIFICATION.



PHYTOREMEDIATION PILOT STUDY SITE FMC Corporation Middleport, New York		
By: JBS	Date: 11/27/07	Project No.: 9936.000
Geomatrix		Figure 2

I:\9900s\9936.000\Pilot Study Site Figure.xls

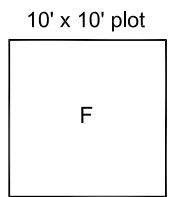
Plot Date: 05/21/08 - 10:16am, Plotted by: jspink
Drawing Path: N:\9000s\009936\acad\ Drawing Name: Agricultural layout.dwg



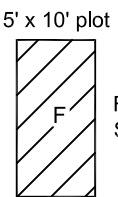
Explanation:

- F = Fern
- R = Rapeseed (canola)
- SF = Sunflower
- P = Phosphorus
- T = Turnip
- SG = Sudangrass
- A = Artichoke

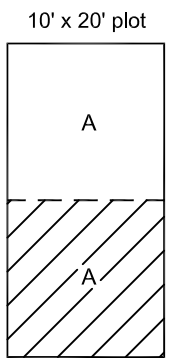
○—○ fence



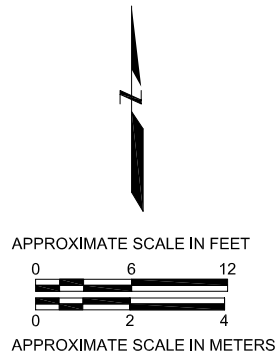
F = 1' spacing
SF = 2' spacing



F = 0.5' spacing
SF = 1' spacing



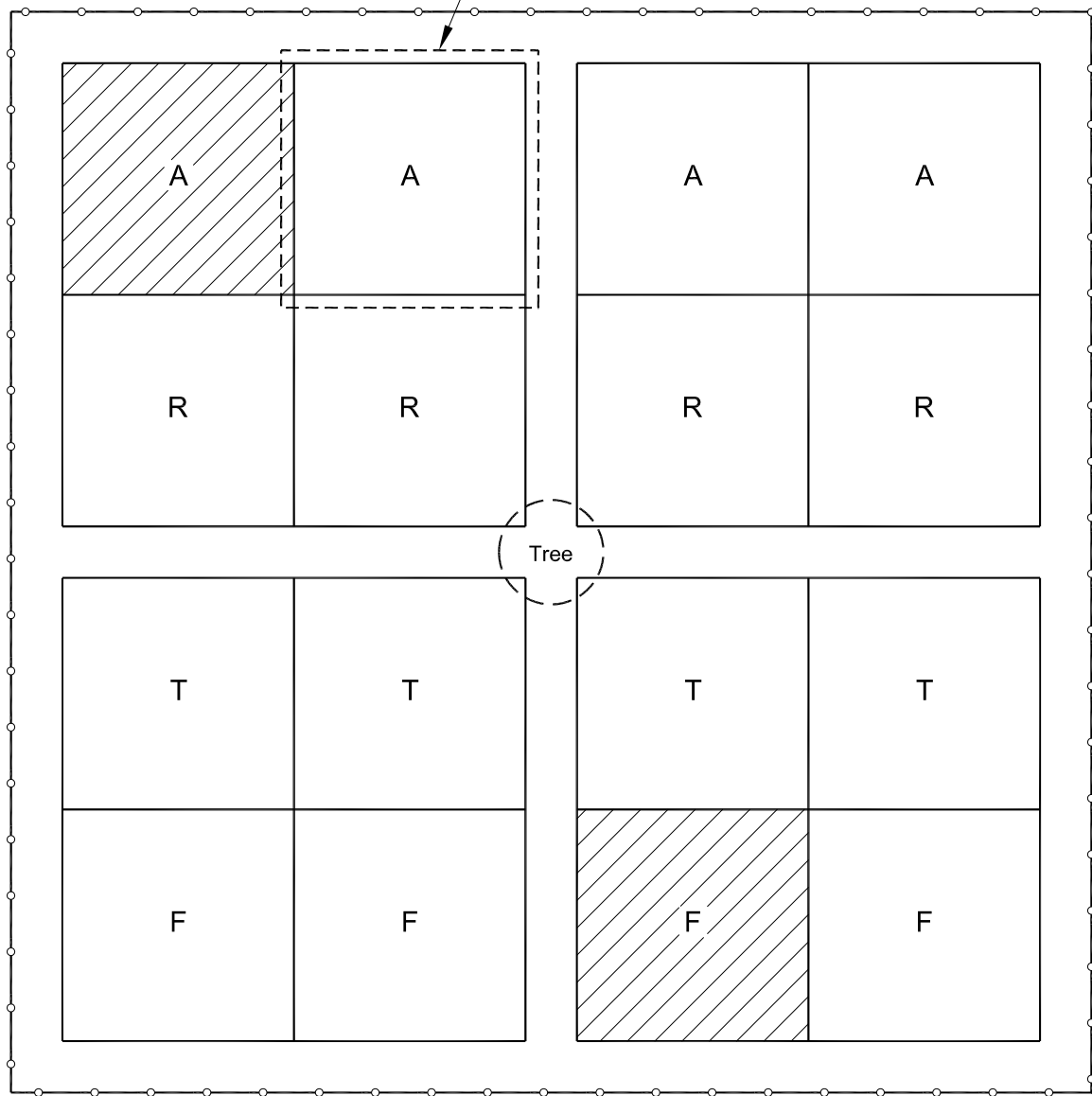
A = 2' spacing
A = 1' spacing



Rapeseed broadcast at a rate of 12 pounds per acre
Turnip broadcast at a rate of 10 pounds per acre

AGRICULTURAL FIELD PHYTOREMEDIATION PLOTS FMC Corporation Middleport, New York		
By: JBS	Date: 05/21/08	Project No. 9936.000
Geomatrix		Figure 3

Typical sampling grid
9 aliquots composited into 1 sample



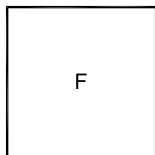
Explanation:

- F = Fern
- T = Turnip
- R = Rapeseed (canola)
- A = Artichoke

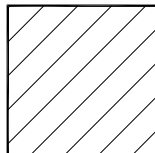
Rapeseed broadcast at a rate of 12 pounds per acre

Turnip broadcast at a rate of 10 pounds per acre

○ — ○ fence



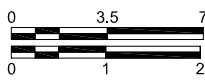
= 9' x 9' plot



A = 1' spacing
F = 0.5' spacing



APPROXIMATE SCALE IN FEET



APPROXIMATE SCALE IN METERS

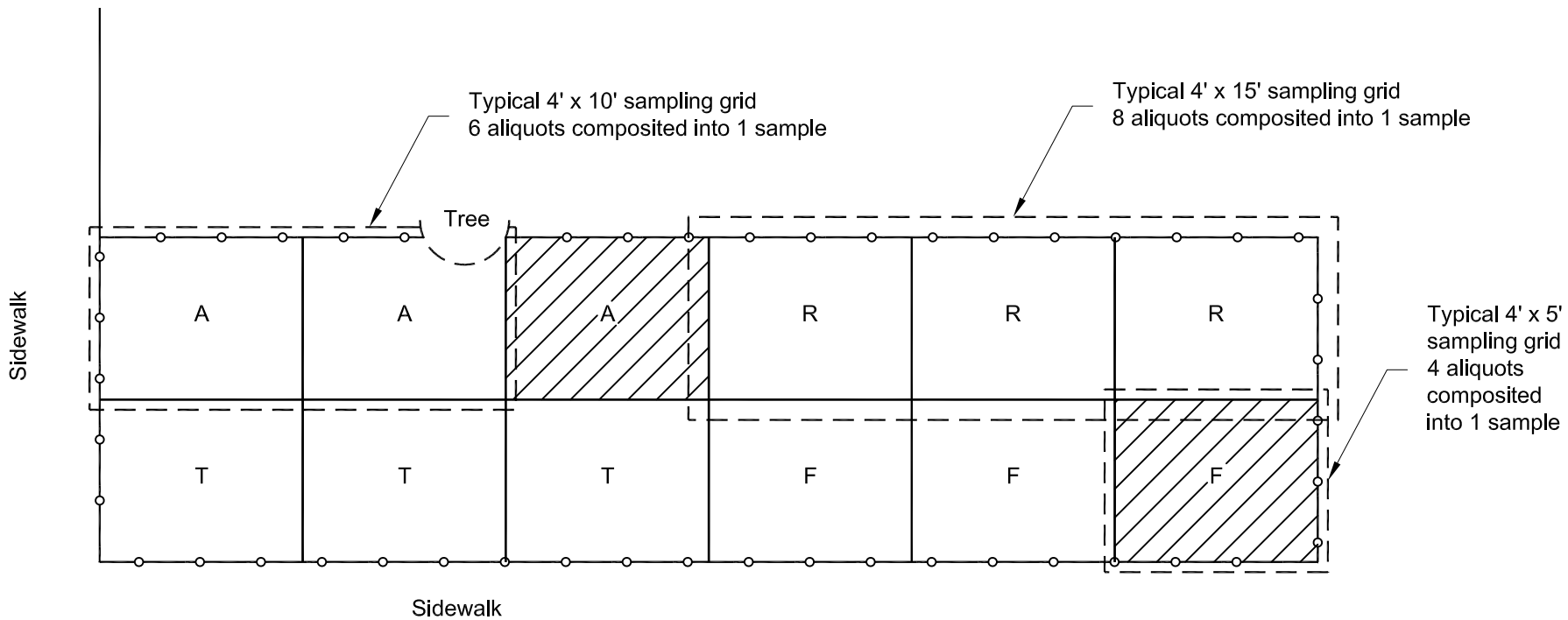
PROPERTY AB4 PHYTOREMEDIATION PLOTS
FMC Corporation
Middleport, New York

By: JBS Date: 05/21/08 Project No. 9936.000



Figure 4

Plot Date: 05/21/08 - 10:31am, Plotted by: jspink
 Drawing Path: N:\9000s\009930\acad1, Drawing Name: F2 layout.dwg



Explanation:

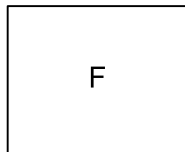
- F = Fern
- T = Turnip
- R = Rapeseed (canola)
- A = Artichoke

—○—○— fence

Rapeseed broadcast at a rate of 12 pounds per acre

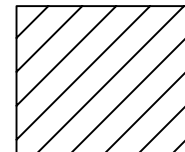
Turnip broadcast at a rate of 10 pounds per acre

4' x 5' plot



A = 2' spacing
F = 1' spacing

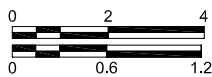
4' x 5' plot



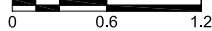
A = 1' spacing
F = 0.5' spacing



APPROXIMATE SCALE IN FEET



APPROXIMATE SCALE IN METERS



PROPERTY F2 PHYTOREMEDIATION PLOTS
 FMC Corporation
 Middleport, New York

By: JBS Date: 05/21/08 Project No. 9936.000



Figure 5